

Puppet Comply™

Achieve continuous compliance without sacrificing agility.

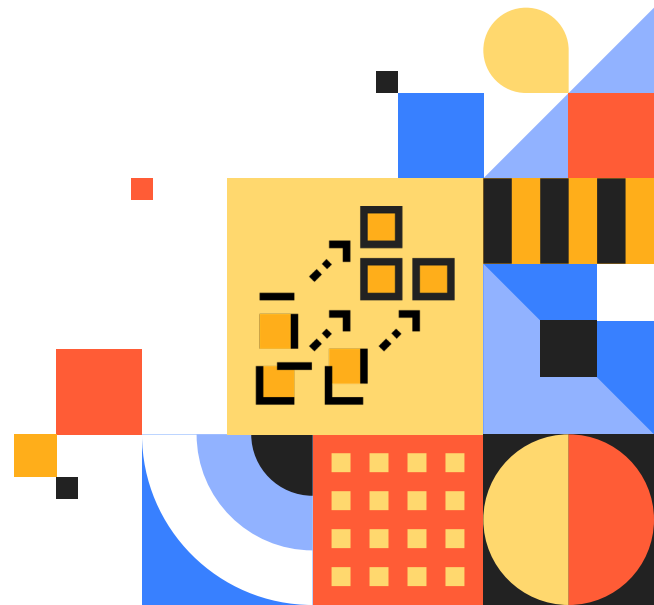
Puppet Comply enables continuous compliance across hybrid infrastructure with less overhead and manual work. With robust scanning and reporting technology, model-based automation, and the expertise of professional services, Puppet Comply provides an end-to-end compliance solution for IT Operations teams — from assessment and remediation to enforcement and audit reporting.

Assess compliance against benchmarks. Puppet Comply scans your infrastructure to assess compliance with the CIS Benchmarks™, providing a clear view of compliance status for each node in your estate.

Enforce continuous compliance. Define compliance policy as code and enforce desired state with model-based automation.

Remediate at scale. Automatically apply compliant configurations to hundreds or thousands of nodes at once.

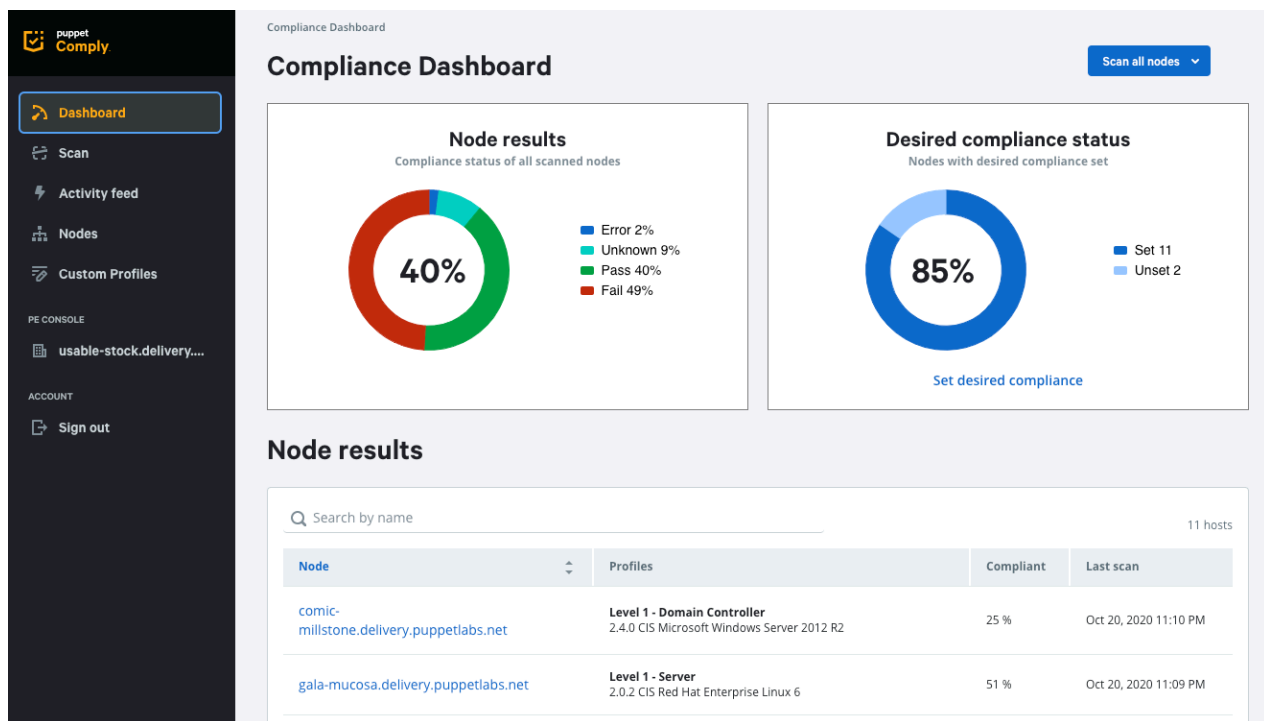
Demonstrate compliance to auditors. Generate automatically updated reports to prove compliance status across your environment.



Assess compliance status across IT environments

You should always be able to answer the question “How compliant is your infrastructure?” Puppet Comply scans your hybrid environment to assess adherence to the CIS Benchmarks™, guidelines developed by the Center for Internet Security to ensure secure system configuration.

- Get a holistic view of compliance status in the Puppet Comply dashboard, and drill down to node-level details to easily identify the cause and source of failures.
- Scans are run via the Puppet agent, enabling you to assess thousands of nodes in a matter of minutes and quickly verify that failures have been remediated.
- Eliminate manual exception handling by defining custom benchmark profiles that scan only for the rules you want to enforce.



Enforce continuous compliance with policy as code

Define compliance policies as code and enforce them with model-based automation to ensure that systems don't drift from their compliant state.

- Incorporate compliance policies into your baseline configurations, and Puppet Enterprise enforces them, continuously checking your infrastructure against desired state and correcting configuration drift.
- Assign enforcement policies to node groups dynamically so that new systems automatically inherit compliant configurations based on their system facts.
- Bridge skill and resource gaps and ensure ongoing compliance with content created by a Puppet expert and tailored to your environment.

Remediate at scale

Reduce error-prone manual work by automating remediation of compliance failures across hundreds or thousands of nodes at once.

- Automatically apply compliant configurations to all relevant systems, rather than manually making changes one by one.

Compliance Dashboard > Rule Results

1.1.3 Ensure nodev option set on /tmp partition

Description Rationale Fix

Edit the `/etc/fstab` file and add `nodev` to the fourth field (mounting options) for the `/tmp` partition. See the `fstab(5)` manual page for more information.

Run the following command to remount `/tmp`:

```
# mount -o remount,nodev /tmp
```

Node results

Results for nodes checked with this rule

100%

- Fail 0%
- Unknown 0%
- Error 0%
- Pass 100%

Node compliance result

Compliance results resulting from last scan using this rule

1 Nodes

Search All

Node	Status	Last Reported On	Last Passed On
gala-mucosa.delivery.puppetlabs.net	pass	Oct 21, 2020 2:35 PM	Oct 21, 2020 2:35 PM

Demonstrate compliance to auditors

With Puppet Comply, you not only *know* you're compliant — you can prove it. Reduce the time and resources required for audit preparation with automatically updated reports that depict compliance status across your infrastructure.

- Demonstrate a consistent, reliable process for each stage of the compliance lifecycle — from assessment to remediation to enforcement.
- Conduct regular scans to identify and remediate failures on a consistent basis, so you can be confident in your compliance posture before an audit.

Visit puppet.com/products/puppet-comply to learn more.

Puppet is driving the movement to a world of unconstrained software change. Its revolutionary platform is the industry standard for automating the delivery and operation of the software that powers everything around us. More than 40,000 companies — including 75 percent of the Fortune 100 — use Puppet's open source and commercial solutions to adopt DevOps practices, achieve situational awareness and drive software change with confidence. Headquartered in Portland, Oregon, Puppet is a privately held company with more than 500 employees around the world. [Learn more at puppet.com](https://puppet.com).

